

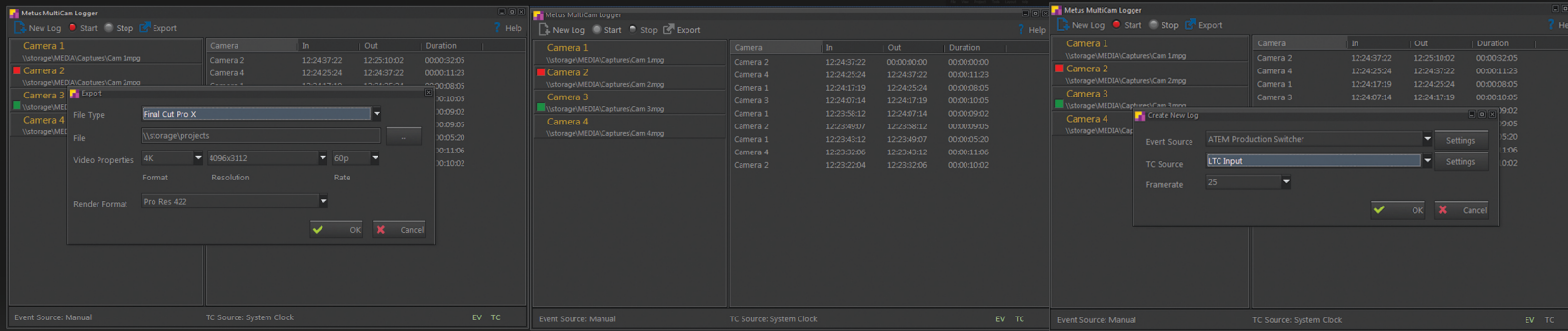
metus Multicam Logger



Log Your Inputs In A Live Production

Log all camera changes during a live production for the fastest possible post production workflow.

[Features & Specifications >](#)



With Logger, directors operating an ATEM unit switch and mix between cameras as usual

metus Multicam Logger

- Supported Devices: Blackmagic Design ATEM Production Switchers or manual mode.
- Timecode input: Windows system clock, LTC through audio line.
- Frame Rates: 24, 25, 30, 50, 60, 23.98, 29.97, 59.94
- Export Formats: Final Cut 7, Final Cut Pro X, Adobe Premiere Pro CC project file.
- Supported Input File Formats: Any formats (can supported by Final Cut Pro, Adobe Premiere Pro CC)
- ATEM Production Switcher line connected through ethernet
- Support for multiple codecs formats and resolutions in one multicam session